

48280AH ASSEMBLING GUIDE

Accessories Mounting:

1. Mount the wheels with **16** M6*12 hexagon Philip screws. As shown in **Fig.1**, set the torque index of the electric screwdriver to 8Nm.
2. Rip open the epoxy insulation board **A/B/C** and stick them to the inner sides of the box. And paste it at the corresponding position as shown in **Fig.2**.

Material:

- 1 pcs battery box and 4pcs wheel,
- 2 pcs Epoxy board A,
- 2 pcs Epoxy board B,
- 2 pcs Epoxy board C,
- 16 pcs M6*12 hexagon phillip screws.

Tools:

- Electric screwdriver,
- 10mm sleeve,
- PH3 cross screwdriver.



Fig.1

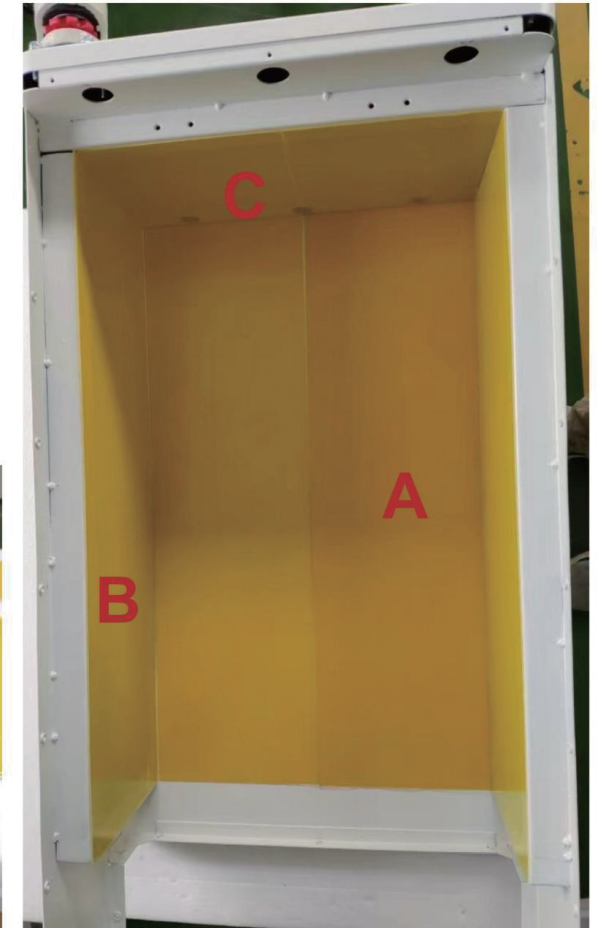


Fig.2

Battery Cell Placement:

1. As shown in **Fig.1**, paste **Epoxy** on the surface of the cell, and the position is shown in the schematic diagram.
2. As shown in **Fig.2**, put the cells into the case. Paste epoxy plate **B** and epoxy plate **C** to separate cell from cell, and cells from front plate.
3. As shown in **Fig.3**, fix the front plate with M6*12 hexagon Philips screws. Set the torque index of the electric screwdriver to 12Nm.

Material:

- 16 pcs cells,
- 18 pcs **Epoxy cells**
- 2 pcs Epoxy board A,
- 1 pcs Epoxy board B,
- 2 pcs Epoxy board C,
- 6 pcs M6*12 hexagon Philips screws.

Tools:

- Electric screwdriver,
- 13mm sleeve,
- PH4 cross screwdriver.



Fig.1

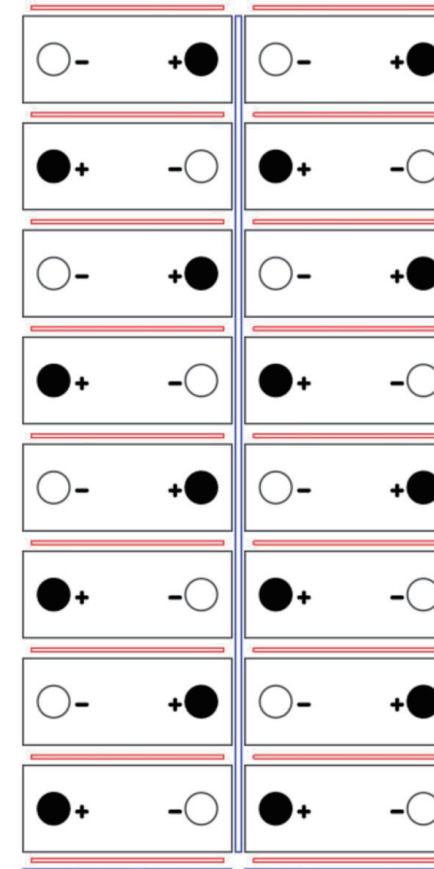


Fig.2



Fig.3



Fig.4

Top Bracket Insulation:

1. As shown in **Fig.1**, paste EVA foam on the bracket and align the hole position.
2. As shown in **Fig.2**, fix the top bracket with M6*12 hexagon Philips screws. Set the torque index of the electric screwdriver to 6Nm.

Battery Cell Connection:

3. Connected the battery cells in series with Copper bus bars, as shown in **Fig.4**.

Material: 2 pcs top bracket EVA foams,
2 pcs top brackets,
8 pcs M6*12 hexagon Phillips screws,

14 pcs Copper bar SF-1,
1 pcs Copper bar SF-L1.

Tools: Electric screwdriver,
10mm sleeve,
PH3 cross screwdriver.



Fig.1



Fig.2



Fig.3



Fig.4

PCB Board Mounting:

1. Fix PCB **A/B** board with **M4*4** hexagon Phillips screws as shown in **Fig.1**. Set the torque index of the electric screwdriver to 4Nm.
2. Connect the lug connectors with battery terminals at the corresponding position as shown in **Fig.2**.
3. Fix the **Copper** bar with M6 flange nuts. Set the torque index of the electric screwdriver to 10Nm.

Material: 2 pcs PCB board,
12 pcs M4*4 hexagon Philips screws,
30 pcs M6 flange nuts.

Tools: Electric screwdriver,
10mm sleeve,
PH3 cross screwdriver,
Torque wrench.

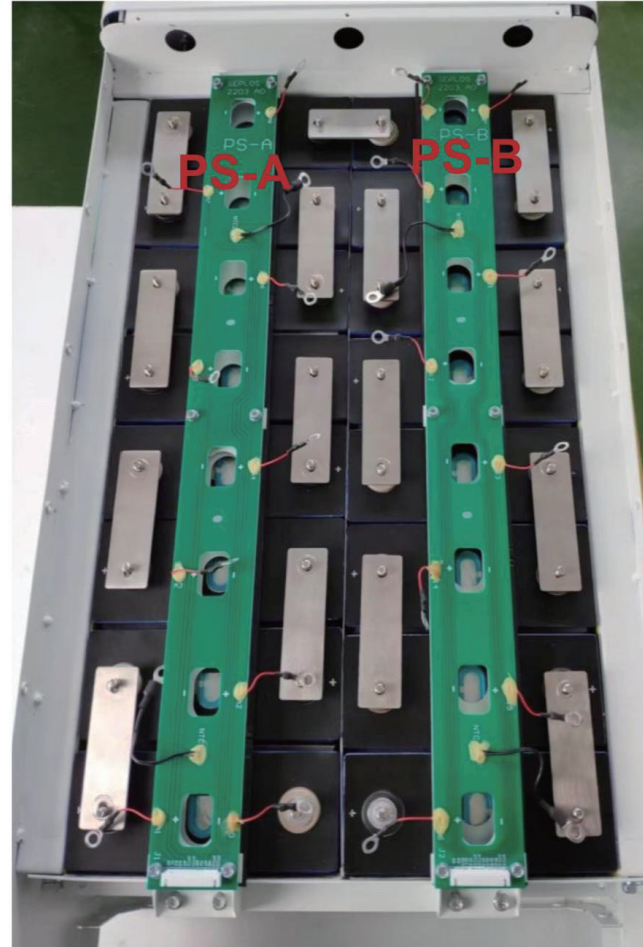


Fig.1



Fig.2

BMS Installation

1. As Fig.1 show
Fixing well Copper and wiring on the BMS
Fixing the Comm board by M3*6 screws (4 pcs)
Fixing the circuit breaker on the back board by the bracket
Fixing the Pole + and Pole - on the back board by M4*10 screws(8 pcs)
2. As Fig.2 show
Fixing the BMS on the division plate
by M3*18 screws (4 pcs)
Fixing the division plate on the case by M4*10 screws
3. As Fig.3 show
It should be done like this

Material

- 1* BMS
- 1* set copper cable
- 1* set sampling cable
- 1* set Pole + and Pole -
- 1* comm board, 1* 4.3 display
- 1* bracket, 1 circuit breaker

Screws: 4XM3*6, 4XM3*18, 4XM4*10, 4XM8*12

Fig.1

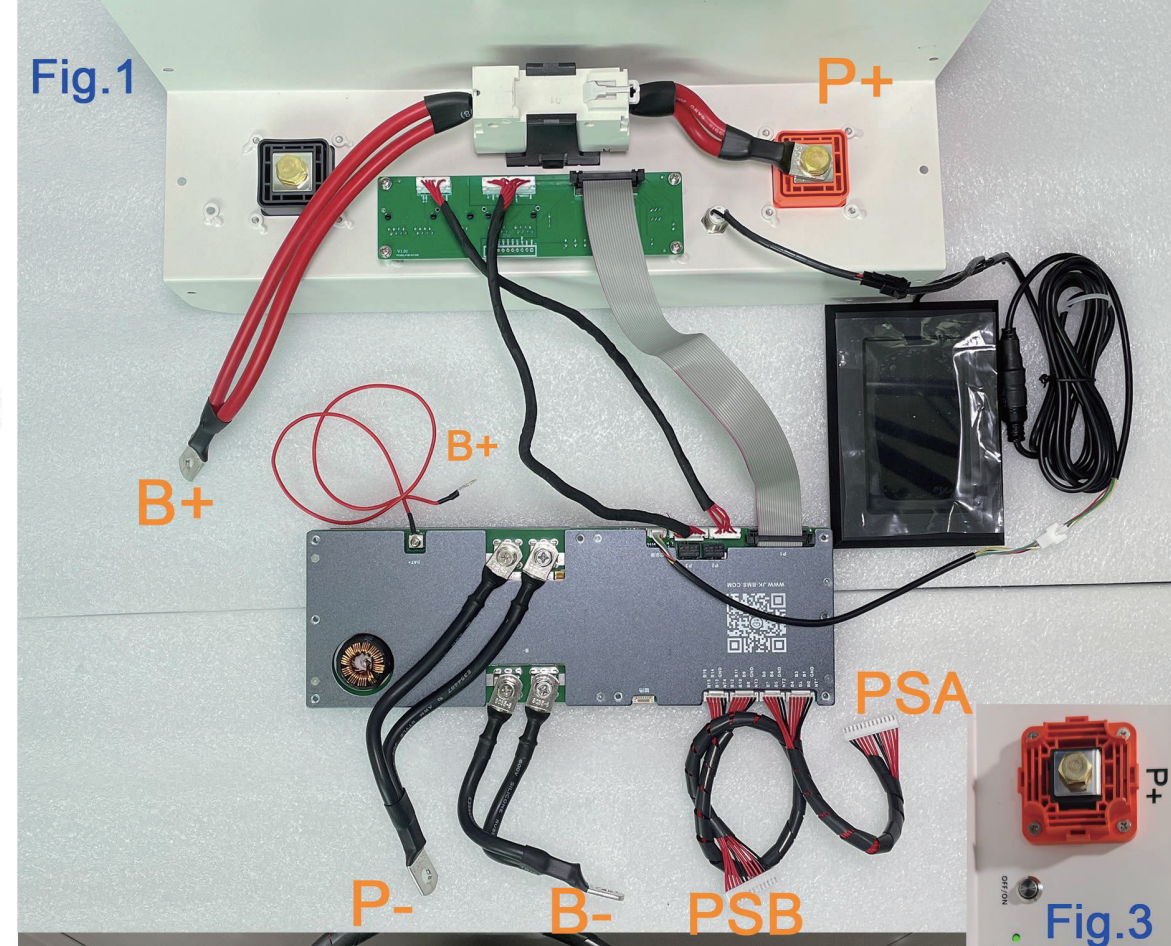


Fig.2

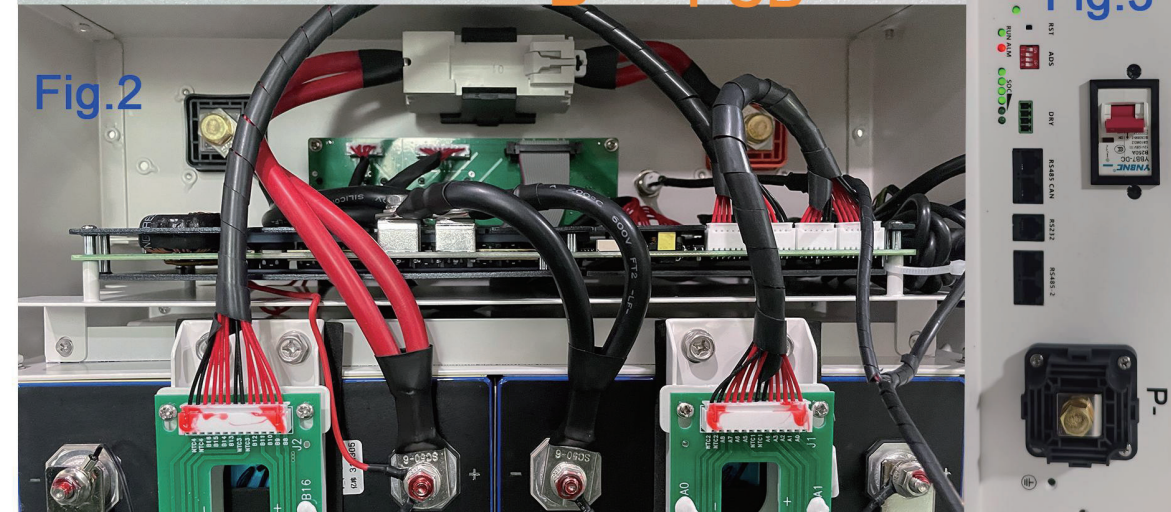


Fig.3





Fixing display

1. As Fig.4 show
Fixing the 4.3 display on the front panel
by the Plum flower screws(4 pcs)
And then connector plug

Material

- 1* Front panel
- 1* 4.3 display
- 4* Plum folwer screws



Fig.4

Fixing Front panel

fix front panel by the M4*10 screws





Changsha Deligreen Power Co., Ltd.

Mobile/Whatsapp: +86-188 9008 1396

Email: info@deligreenpower.com

Website: <http://www.lithium-solarbattery.com>

<https://www.deligreenpower.com>

Address: Room 1418-1422, Building A, Wanda Plaza, Dujuan Road, Yuelu District.

Changsha City, Hunan Province

Factory address: Kinglong Industrial Park, Zhangmutou, Dongguan, Guangdong, China